



## Specifications

### Engine

Model \_\_\_\_\_ Tier 4 interim certified ISUZU AM-4JJ1X  
 Type \_\_\_\_\_ Water-cooled, 4-cycle diesel, 4-cylinder in line,  
 High pressure common rail system (electric control), Turbocharger  
 with air cooled intercooler, DPD system  
 Number of cylinders \_\_\_\_\_ 4  
 Bore/Stroke \_\_\_\_\_ 95.4 x 104.9 mm  
 Horsepower ISO 9249 \_\_\_\_\_ 74.9 kW at 2000 min<sup>-1</sup>  
 Maximum torque ISO 9249 \_\_\_\_\_ 359 Nm at 1600 min<sup>-1</sup>

### Hydraulic system

Max oil flow \_\_\_\_\_ 2 x129 l/min @ 2000 min<sup>-1</sup>  
 2 variable displacement axial piston pumps with regulating system  
 Working circuit pressure \_\_\_\_\_  
 Boom/Arm/Bucket \_\_\_\_\_ 34.3 MPa  
 Boom/Arm/Bucket (with auto power up) \_\_\_\_\_ 36.3 MPa  
 Swing circuit \_\_\_\_\_ 27.9 MPa  
 Travel \_\_\_\_\_ 34.3 Mpa

### Swing

Maximum swing speed \_\_\_\_\_ 14.3 min<sup>-1</sup>

### Travel

Travel motor \_\_\_\_\_ Variable displacement axial piston motor  
 Max travel speed \_\_\_\_\_ 5.6 km/h (Automatic travel speed shifting)  
 Low travel speed \_\_\_\_\_ 3.4 km/h  
 Gradeability \_\_\_\_\_ 70% (35°)  
 Drawbar pull \_\_\_\_\_ 116 kN

### Electrical system

Alternator \_\_\_\_\_ 50 Amp

### Undercarriage

Number of carriers rollers (each side) \_\_\_\_\_ 2  
 Number of track rollers (each side) \_\_\_\_\_ 7  
 Number of shoes (each side) \_\_\_\_\_ 47  
 Type of shoe \_\_\_\_\_ Triple grouser shoe

### Capacities

Fuel tank \_\_\_\_\_ 260 l  
 Hydraulic system \_\_\_\_\_ 157 l  
 Cooling system \_\_\_\_\_ 16.2 l

## Weight and ground pressure

With 2.50 m Arm , 0.5 m<sup>3</sup> bucket, operator, lubricant, coolant, full fuel tank

CX130C	Weight (kg)	Ground pressure (MPa)
600 mm grouser shoe	13.200	0.033

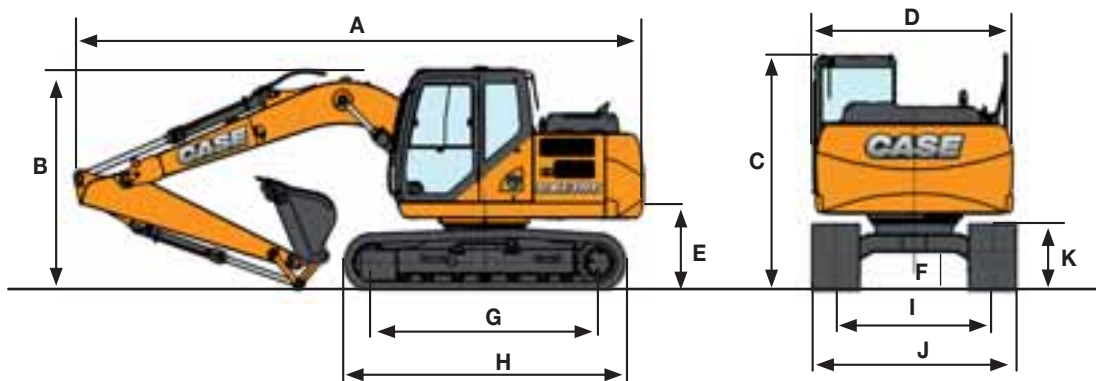
CX130C BLADE	Weight (kg)	Ground pressure (MPa)
600 mm grouser shoe	13.800	0.038

# CX C-SERIES HYDRAULIC EXCAVATORS

CX130C

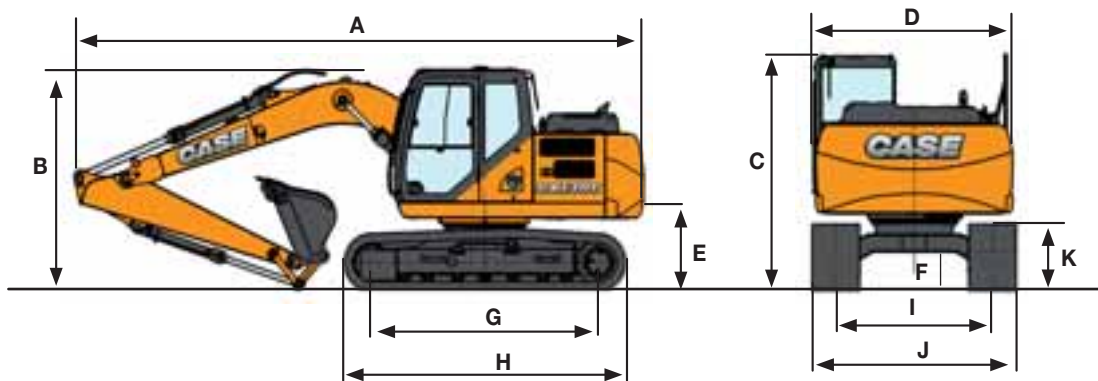
TIER 4 INTERIM

## General dimensions



	Arm 2.50 m	Arm 3.00 m	Arm 2.10 m
Overall length (without attachment)	4010 mm	4010 mm	4010 mm
A Overall length (with attachment)	7620 mm	7610 mm	7610 mm
B Overall height (with attachment)	2920 mm	2920 mm	2920 mm
C Cab height	2920 mm	2920 mm	2920 mm
D Upper structure overall width	2540 mm	2540 mm	2540 mm
Swing (rear end) radius	2130 mm	2130 mm	2130 mm
E Clearance height under upper structure	895 mm	895 mm	895 mm
F Minimum ground clearance	440 mm	440 mm	440 mm
G Wheel base (Center to center of wheels)	3040 mm	3040 mm	3040 mm
H Crawler overall length	3760 mm	3760 mm	3760 mm
I Track gauge	1990 mm	1990 mm	1990 mm
J Undercarriage overall width (with 600 mm shoes)	2590 mm	2590 mm	2590 mm
K Crawler tracks height	790 mm	790 mm	790 mm

## General dimensions



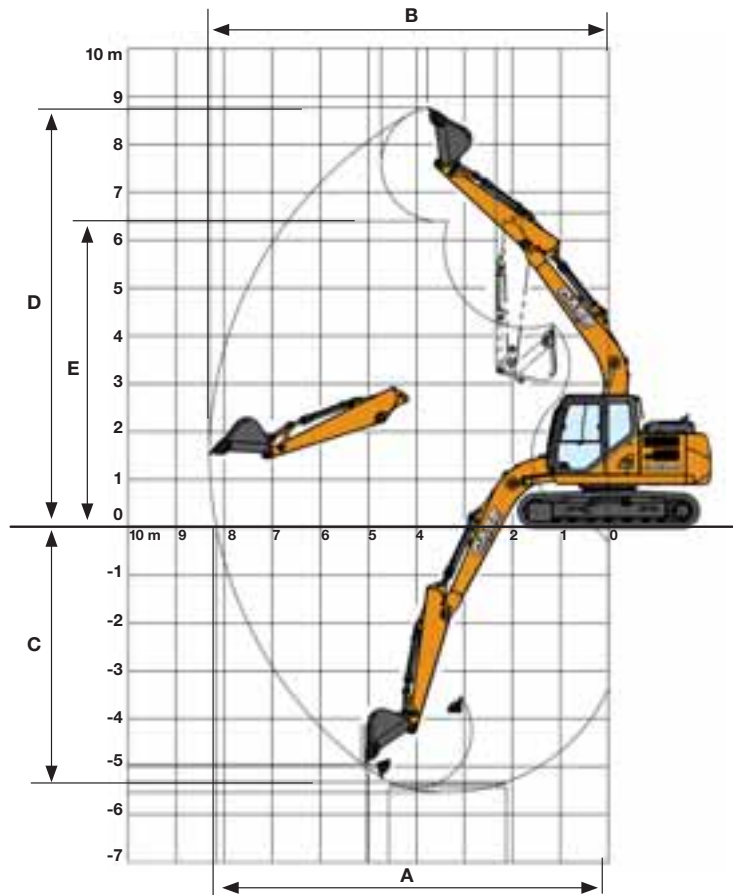
<b>CX130C BLADE</b>	<b>Arm 2.50 m</b>	<b>Arm 3.00 m</b>	<b>Arm 2.10 m</b>
Overall length (without attachment)	4180 mm	4180 mm	4180 mm
<b>A</b> Overall length (with attachment)	7920 mm	7910 mm	7910 mm
<b>B</b> Overall height (with attachment)	2920 mm	2920 mm	2920 mm
<b>C</b> Cab height	2920 mm	2920 mm	2920 mm
<b>D</b> Upper structure overall width	2540 mm	2540 mm	2540 mm
Swing (rear end) radius	2130 mm	2130 mm	2130 mm
<b>E</b> Clearance height under upper structure	895 mm	895 mm	895 mm
<b>F</b> Minimum ground clearance	440 mm	440 mm	440 mm
<b>G</b> Wheel base (Center to center of wheels)	2790 mm	2790 mm	2790 mm
<b>H</b> Crawler overall length	3500 mm	3500 mm	3500 mm
<b>I</b> Track gauge	1990 mm	1990 mm	1990 mm
<b>J</b> Undercarriage overall width (with 600 mm shoes)	2590 mm	2590 mm	2590 mm
<b>K</b> Crawler tracks height	790 mm	790 mm	790 mm

# CX C-SERIES HYDRAULIC EXCAVATORS

CX130C

TIER 4 INTERIM

## Performance data



### CX130C / CX130C BLADE

Arm 2.50 m

Arm 3.00 m

Arm 2.10 m

Boom length	4630 mm	4630 mm	4630 mm
Bucket radius	1200 mm	1200 mm	1200 mm
Bucket wrist action	178°	178°	178 °
A Maximum reach at GRP	8170 mm	8640 mm	7810 mm
B Maximum reach	8310 mm	8770 mm	7960 mm
C Max. digging depth	5540 mm	6050 mm	5150 mm
D Max. digging height	8770 mm	9050 mm	8550 mm
E Max. dumping height	6390 mm	6680 mm	6170 mm

## Digging force With 0.5 m<sup>3</sup> bucket (ISO 6015)

### CX130C / CX130C BLADE

Arm 2.50 m

Arm 3.00 m

Arm 2.10 m

Arm digging force	62 kN	56 kN	70 kN
- with auto power boost	66 kN	60 Kn	74 kN
Bucket digging force	90 kN	90 kN	90 kN
- with auto power boost	95 kN	95 kN	95 kN

# Lifting capacity

Front 360°	REACH												
	0 m	1.5 m	3.0 m	4.5 m	6.0 m	7.5 m	At max reach						

## Standard arm. 2.50 m arm length, 0.50 m<sup>3</sup> bucket, 600G LC shoes, max reach 8.02 m

7.5 m							1840 *	1840 *					1430*	1430*	5.22
6.0 m									2380 *	2220			1210*	1210*	6.7
4.5 m							2910 *	2910 *	2840 *	2180	1250*	1250*	1150*	1150*	7.53
3.0 m					5260*	5260*	3960 *	3370	3240	2080	2210	1380	1150*	1150*	7.94
1.5 m					7710*	5900	4990	3120	3130	1960	2160	1330	1210*	1170	8.02
0 m			2480 *	2480 *	7980*	5440	4810	2910	3020	1860	2110	1290	1350*	1200	7.8
-1.5 m	3700 *	3700*	5020 *	5020 *	9250*	5400	4710	2820	2960	1810			1620*	1350	7.25
-3.0 m	5050 *	5050*	7810 *	7810 *	8530*	5500	4750	2870	3020	1880			2180	1710	6.31
-4.5 m					6470*	5660	4010 *	3000					3500*	2710	4.76

## Short arm. 2.10 m arm length, 0.55 m<sup>3</sup> bucket, 600G LC shoes, max reach 7.67 m

7.5 m							2070 *	2070 *					1760*	1760*	4.6
6.0 m							2900 *	2900 *	2270 *	2150			1460*	1460*	6.26
4.5 m							3240 *	3240 *	3020 *	2120			1370*	1370*	7.14
3.0 m					5680*	5680*	4250 *	3280	3200	2030	1810*	1330	1370*	1300	7.58
1.5 m					8030*	5680	4950	3030	3080	1910	2120	1290	1440*	1240	7.67
0 m					7270*	5320	4740	2840	2980	1820			1600*	1280	7.44
-1.5 m			5460 *	5460 *	9090*	5380	4680	2800	2950	1800			1920*	1470	6.86
-3.0 m			8160 *	8160 *	8060*	5520	4750	2880					2660*	1920	5.85
-4.5 m													3810*	3550	4.0

## Long arm. 3.00 m arm length, 0.37 m<sup>3</sup> bucket, 600G LC shoes, max reach 8.48 m

7.5 m													1370*	1370*	5.96
6.0 m									2240 *	2240*			1200*	1200*	7.26
4.5 m									2610 *	2250	2050*	1470	1140*	1140*	8.02
3.0 m							3450 *	3390	2990 *	2140	2250	1420	1150*	1110	8.4
1.5 m					6630*	6100	4700 *	3180	3170	2000	2180	1350	1210*	1060	8.49
0 m			2600 *	2600 *	8570*	5490	4840	2930	3030	1870	2120	1290	1340*	1080	8.28
-1.5 m			4560 *	4560 *	9100*	5320	4680	2800	2950	1800	2090	1270	1570*	1200	7.76
-3.0 m			6670 *	6670 *	8870*	5380	4690	2810	2970	1820			2040*	1470	6.89
-4.5 m			10690 *	10690 *	7350*	5590	4720	2970					3290*	2140	5.49

\* Hydraulic capacity 87%



# Lifting capacity

Front 360°	REACH												
	0 m	1.5 m	3.0 m	4.5 m	6.0 m	7.5 m	At max reach		m				

## CX130C BLADE DOWN. Standard arm. 2.50 m arm length, 0.50 m<sup>3</sup> bucket, 600G shoes, max reach 8.31 m

7.5 m							1840*	1840*					1430*	1430*	5.22				
6.0 m									2380*	2380*			1210*	1210*	6.7				
4.5 m							2910*	2910*	2840*	2400	1250*	1250*	1150*	1150*	7.53				
3.0 m							5260*	5260*	3960*	3680	3280*	2300	2410*	1540	1150*	1150*	7.94		
1.5 m							7710*	6550	5070*	3440	3840*	2180	2880*	1490	1210*	1210*	8.02		
0 m							2480*	2480*	7980*	6080	5810*	3230	4220*	2070	2670*	1450	1350*	1350*	7.8
-1.5 m							5020*	5020*	9250*	6040	2950*	3140	4270*	2030			1620*	1520	7.25
-3.0 m							7810*	7810*	8530*	6140	5610*	3190	2840*	2090			2180*	1910	6.31
-4.5 m							6470*	6230	4010*	3320							3500*	3010	4.76

## CX130C BLADE DOWN. Short arm. 2.10 m arm length, 0.50 m<sup>3</sup> bucket, 600G LC shoes, max reach 7.96 m

7.5 m							2070*	2070*							1760*	1760*	4.6		
6.0 m							2900*	2900*	2270*	2270*					1460*	1460*	6.26		
4.5 m							3240*	3240*	3020*	2340					1370*	1370*	7.14		
3.0 m							5680*	5680*	4250*	3610	3460*	2240	1810*	1490	1370*	1370*	7.58		
1.5 m							8030*	6330	5290*	3360	3950*	2130	2360*	1450	1430*	1390	7.67		
0 m							7270*	5940	5870*	3170	4240*	2040			1600*	1440	7.44		
-1.5 m							5460*	5460*	9090*	6020	5890*	3120	4210*	2010			1920*	1640	6.86
-3.0 m							8160*	8160*	8060*	6150	5350*	3200					2660*	2140	5.85
-4.5 m							5480*	5480*									3810*	3810*	4.0

## CX130C BLADE DOWN. Long arm. 3.00 m arm length, 0.50 m<sup>3</sup> bucket, 600G LC shoes, max reach 8.77 m

7.5 m															1370*	1370*	5.96							
6.0 m										2240*	2240*				1200*	1200*	7.26							
4.5 m										2610*	2430	2050*	1630	1140*	1140*	8.02								
3.0 m										3450*	3450*	2990*	2350	2590*	1580	1150*	1150*	8.4						
1.5 m										6630*	6620*	4700*	3510	3630*	2210	3040*	1510	1210*	1200	8.49				
0 m										2600*	2600*	8570*	6130	5590*	3250	4090*	2090	3260*	1450	1340*	1230	8.28		
-1.5 m										3700*	3700*	4560*	4560*	9100*	5950	5920*	3120	4260*	2010	2630*	1430	1570*	1350	7.76
-3.0 m										5040*	5040*	6670*	6670*	8870*	6020	5760*	3130	4090*	2030			2040*	1650	6.89
-4.5 m										10690*	10690*	7360*	6220	4790*	3290							3290*	2380	5.49

\* Hydraulic capacity 87%

# Standard Equipment

## ENGINE

Isuzu 4-cylinder turbodiesel in line  
Certified Tier 4 interim / EU stage  
3b

Electronic fuel injection  
High pressure common rail system  
Variable geometry turbo charger  
Exhaust gas recirculation  
Diesel Particulate Diffuser (DPD)  
Neutral safety start  
Auto-engine warm up, emergency  
stop  
Glow-plug pre-heat  
Idle System:

Auto-idle  
One-touch idle  
Idle shut-down  
EPF (Engine Protection Feature)  
Dual-stage fuel filtration  
Dual element airfilter  
Remote oil filter  
Green plug oil drain  
500-hour engine oil change  
interval  
Refuelling Pump

## HYDRAULICS

Auto power boost  
Auto swing priority

Auto travel speed change  
Selectable work modes  
Overload warning device  
SWC - SWING RELIEF CONTROL  
SSC - SPOOL STROKE CONTROL  
BEC - BOOM ECONOMY CONTROL  
AEC - AUTO ECONOMY CONTROL  
SEC - SWING ECONOMY CONTROL  
ISO pattern controls  
Pre-set auxiliary pump settings  
Switch controlled auxiliary  
selection  
Auxiliary valve  
Auxiliary pipe brackets  
5,000 hour hydraulic oil change  
interval  
1,000 hour hydraulic filter change  
interval  
Hydraulic track adjustment  
SAHR brake

## UPPERSTRUCTURE

Isolation mounted cab (fluid and  
spring)  
Common key vandal locks  
Swivel guard belly pan  
Rear view safety camera

## ATTACHMENT

Standard monoboom 4.63 m

Arm 2.50 m  
Bucket linkage with hook  
Boom mounted work light (70 watt)  
Auxiliary pipe brackets  
Centralized lube bank  
Attachment cushion valve  
Arm and boom regeneration  
Arm and boom hose burst check  
valves

## OPERATOR STATION

ROPS/FOPS level 1 cab  
FOPS guard OPG level II on cab  
roof  
Pressurized cab  
Tempered safety glass  
One-touch lock front window  
Sun visor & rain deflector  
AC/heat/defrost w/ auto climate  
control  
Hot & coolbox, cup holder &  
ashtray  
Interior dome light  
Cloth covered air-suspension seat  
Seat-belt  
Adjustable armrests  
Tilting consoles - 4-position  
Low-effort controls (short)  
Sliding cockpit (180 mm)

Controls pre-wired for auxiliary  
Auxiliary select system  
Straight travel  
Aux-in port for personal electronics  
Multifunction color monitor  
Rear-view camera  
Anti-theft system (start code  
system)  
Rubber floor mat  
12-volt electric socket  
24-volt cigarette lighter  
One-piece right hand window  
2 internal & 3 external view mirrors  
2 working lights (boom &  
upperstructure)  
2 cab top working lights  
Windshield wiper / washer  
Clear (Lexan) roof window w/  
sunshade  
Storage compartments  
On-board diagnostic system  
Travel alarm with cancel switch

## UNDERCARRIAGE

600 mm steel shoes, triple  
semigrouser  
Full overlap turntable bearing tub

# Options

## HYDRAULICS

Auxiliary Hydraulics -  
Single acting pedal activated  
breaker circuit  
Pedal-activated  
multifunction circuit  
Pedal activated low-flow circuit

## ATTACHMENT

Arm - 2.10 m / 3 m  
Hydr. or mech quickcoupler

Buckets: Extreme / Heavy duty /  
GP / ditching  
Hammers, shears, grapples

## OPERATOR STATION

Front cab guard - vertical bars  
(OPG level 2)  
Front cab guard - vertical bars  
(OPG level 1)  
Front mesh screen  
AM/FM radio w/ antenna and

2-speakers  
Side-view camera

## UPPERSTRUCTURE

Auto centralized greasing system  
Rubber bumper guard  
(order through Service Parts)

## UNDERCARRIAGE

Steel shoes, triple semi-grouser  
500mm, 600 mm, 700mm

Rubber link chain 500mm  
Double track guide

*Standard and optional equipment shown can vary by country.*

## Worldwide Case Construction Equipment Contact Information

### EUROPE:

via Plava, 80  
10135 TORINO - ITALIA

### AFRICA/MIDDLE EAST/CIS:

Riva Paradiso 14  
6902 Paradiso - SWITZERLAND

### NORTH AMERICA/MEXICO:

700 State Street  
Racine, WI 53404 U.S.A.

### LATIN AMERICA:

Av. General David Sarnoff 2237  
32210 - 900 Contagem - MG  
Belo Horizonte BRAZIL

### ASIA PACIFIC:

Unit 1 - 1 Foundation Place - Prospect  
New South Wales - 2148 AUSTRALIA

### CHINA:

No. 29, Industrial Premises, No. 376.  
De Bao Road, Waigaoqiao Ftz, Pudong,  
SHANGHAI, 200131, P.R.C.

## CASE Construction Equipment

CNH UK Ltd  
Unit 4, Hayfield Lane Business Park,  
Field Lane, Auckley,  
Doncaster, DN9 3FL  
Tel. 00800-2273-7373  
Fax +44 1302 802829



**CASE** Customer  
Assistance  
**00800-2273-7373**

The call is free from a land line. Check  
in advance with your Mobile Operator if  
you will be charged.



NOTE: Standard and optional fittings can vary according to the demands and  
specific regulations of each country. The illustrations may include optional  
rather than standard fittings - consult your Case dealer. Furthermore, CNH  
reserves the right to modify machine specifications without incurring any  
obligation relating to such changes.

Conforms to directive 2006/42/CE

